


**Project:** Four Seasons Hotel  
**Reference Number:** LTHW 7-8

**Client:** Briggs & Forrester  
**Client Number:**  
**Contact:** John Nicholls

Position	Qty.	Description	Single Price
	1	<p><b>NB 100-250/270 A-F-A BAQE</b></p>  <p><b>Note! Product picture may differ from actual product</b></p> <p>Product No.: 95109786</p> <p>Non-self priming, single-stage centrifugal pump according to EN 1092-2.</p> <p>The pump is for the pumping of thin, clean or slightly contaminated liquids without abrasive or long-fibred solids.</p> <p>The pump is directly coupled with an IEC-flanged 3-phase AC motor.</p> <p>The impeller is hydraulically as well as dynamically balanced.</p> <p><b>The pump has the following characteristics:</b></p> <ul style="list-style-type: none"> <li>- flange dimensions according to EN 1092-2,</li> <li>- Cast iron volute pump housing,</li> <li>- stainless steel shaft and Cast iron impeller and bronze wear rings,</li> <li>- unbalanced mechanical shaft seal according to EN 12756.</li> </ul> <p><b>Liquid:</b></p> <p>Liquid temperature range: 0 .. 120 °C  Liquid temp: 70 °C  Density: 977.8 kg/m³</p> <p><b>Technical:</b></p> <p>Speed for pump data: 1465 rpm  Actual calculated flow: 44.31 l/s  Resulting head of the pump: 245 kPa  Actual impeller diameter: 270 mm  Shaft seal: BAQE  Curve tolerance: ISO 9906 Annex A</p> <p><b>Materials:</b></p> <p>Pump housing: Cast iron  EN-GJL-250  ASTM A48-40 B</p> <p>Impeller: Cast iron</p>	Price on request

**Project:** Four Seasons Hotel  
**Reference Number:** LTHW 7-8

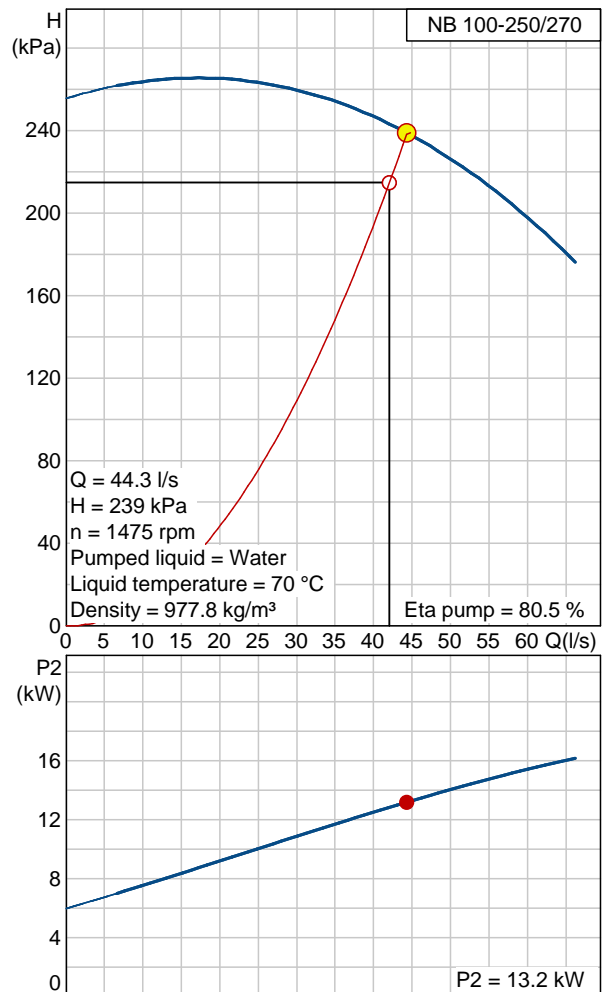
**Client:** Briggs & Forrester  
**Client Number:**  
**Contact:** John Nicholls

Position	Qty.	Description	Single Price
		EN-GJL-200 ASTM A48-30 B	
		<b>Installation:</b> Maximum ambient temperature: 40 °C Maximum operating pressure: 1600 kPa Flange standard: EN 1092-2 Pump inlet: DN 125 Pump outlet: DN 100 Pressure stage: PN16	
		<b>Electrical data:</b> Motor type: SIEMENS Efficiency class: 1 Number of poles: 4 Rated power - P2: 18.5 kW Mains frequency: 50 Hz Rated voltage: 3 x 380-415 D / 660-690 Y V Rated current: 34.5 / 20 A Starting current: 700 % Cos phi - power factor: 0,84 Rated speed: 1470 rpm Motor efficiency at full load: 92,5 % Motor efficiency at 3/4 load: 93,0 % Enclosure class (IEC 34-5): 55 Insulation class (IEC 85): F	
		<b>Others:</b> Net weight: 233 kg Gross weight: 247 kg Shipping volume: 0.725 m3	

**Project:** Four Seasons Hotel  
**Reference Number:** LTHW 7-8

**Client:** Briggs & Forrester  
**Client Number:**  
**Contact:** John Nicholls

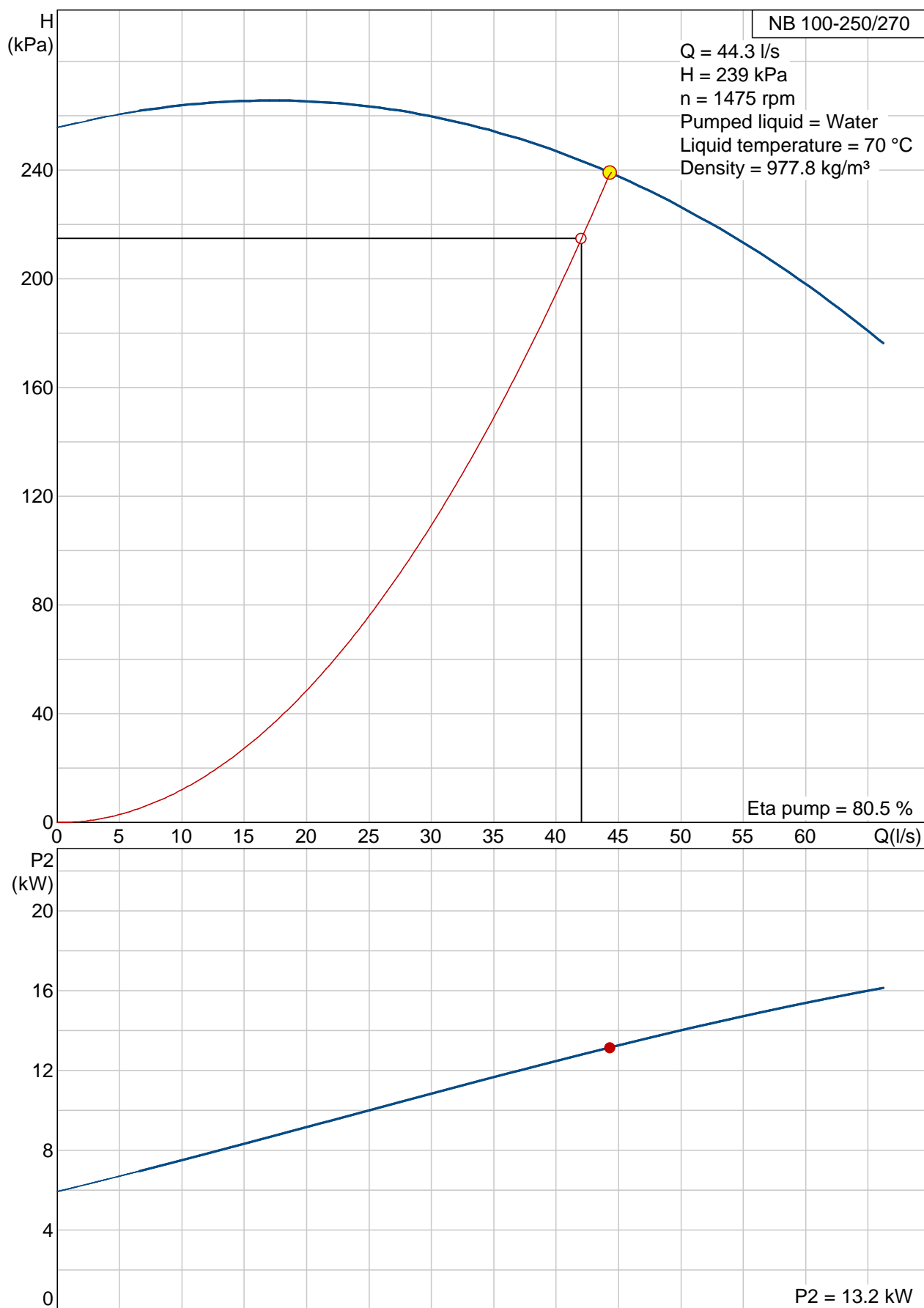
Description	Value
Product name:	NB 100-250/270 A-F-A BAQE
Product No:	95109786
EAN number:	5700836490888
Price:	On request
Technical:	
Speed for pump data:	1465 rpm
Actual calculated flow:	44.31 l/s
Resulting head of the pump:	245 kPa
Actual impeller diameter:	270 mm
Shaft seal:	BAQE
Shaft diameter:	32 mm
Curve tolerance:	ISO 9906 Annex A
Pump version:	A
Materials:	
Pump housing:	Cast iron
	EN-GJL-250
	ASTM A48-40 B
Impeller:	Cast iron
	EN-GJL-200
	ASTM A48-30 B
Material code:	A
Installation:	
Maximum ambient temperature:	40 °C
Maximum operating pressure:	1600 kPa
Flange standard:	EN 1092-2
Connect code:	F
Pump inlet:	DN 125
Pump outlet:	DN 100
Pressure stage:	PN16
Wear ring(s):	neckring(s)
Liquid:	
Liquid temperature range:	0 .. 120 °C
Liquid temp:	70 °C
Density:	977.8 kg/m <sup>3</sup>
Electrical data:	
Motor type:	SIEMENS
Efficiency class:	1
Number of poles:	4
Rated power - P2:	18.5 kW
Mains frequency:	50 Hz
Rated voltage:	3 x 380-415 D / 660-690 Y V
Rated current:	34.5 / 20 A
Starting current:	700 %
Cos phi - power factor:	0,84
Rated speed:	1470 rpm
Motor efficiency at full load:	92,5 %
Motor efficiency at 3/4 load:	93,0 %
Enclosure class (IEC 34-5):	55
Insulation class (IEC 85):	F
Motor protec:	PTC
Motor No:	83B15428
Motor range:	Premium
Others:	
Net weight:	233 kg
Gross weight:	247 kg
Shipping volume:	0.725 m3



**Project:** Four Seasons Hotel  
**Reference Number:** LTHW 7-8

**Client:** Briggs & Forrester  
**Client Number:**  
**Contact:** John Nicholls

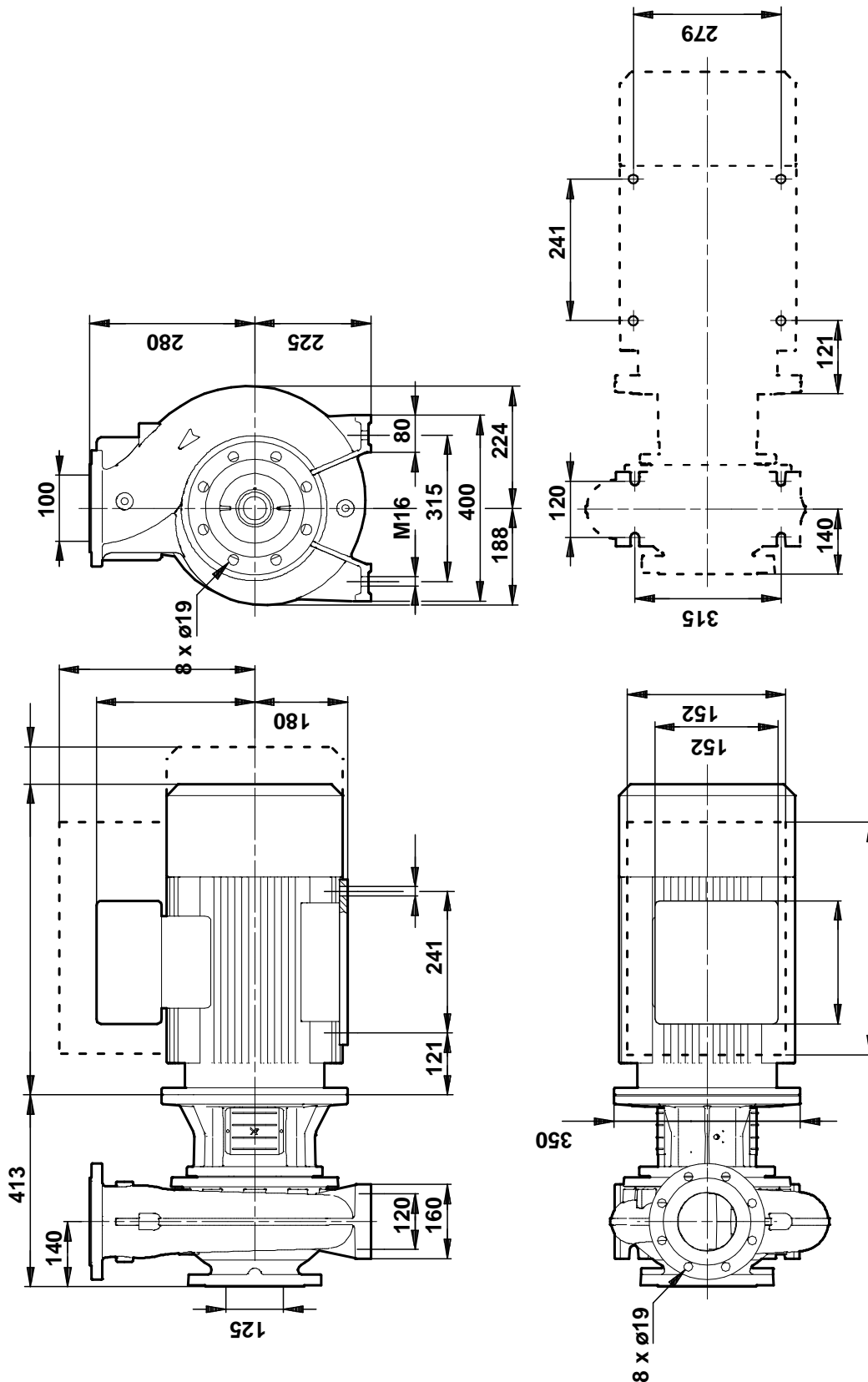
### 95109786 NB 100-250/270 50 Hz



**Project:** Four Seasons Hotel  
**Reference Number:** LTHW 7-8

**Client:** Briggs & Forrester  
**Client Number:**  
**Contact:** John Nicholls

**95109786 NB 100-250/270 50 Hz**

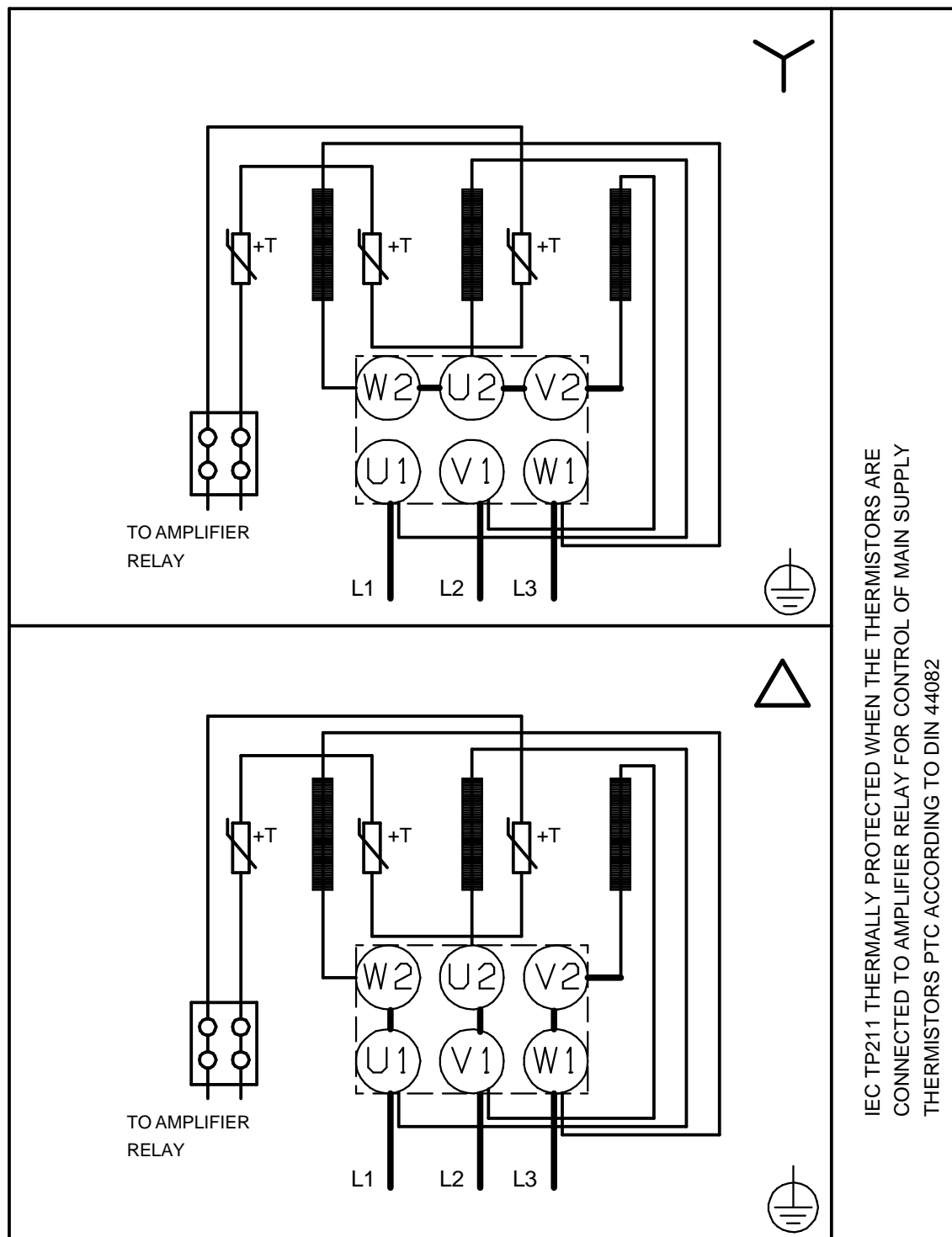


Note! All units are in [mm] unless others are stated.  
Disclaimer: This simplified dimensional drawing does not show all details.

**Project:** Four Seasons Hotel  
**Reference Number:** LTHW 7-8

**Client:** Briggs & Forrester  
**Client Number:**  
**Contact:** John Nicholls

**95109786 NB 100-250/270 50 Hz**



Note! All units are in [mm] unless others are stated.