


**Project:** Four Seasons Hotel  
**Reference Number:** LTHW 3-4

**Client:** Briggs & Forrester  
**Client Number:**  
**Contact:** John Nicholls

Position	Qty.	Description	Single Price																						
	1	<div><div></div><div>Note! Product picture may differ from actual product</div></div> <p>Product No.: 95109767</p> <p>Non-self priming, single-stage centrifugal pump according to EN 1092-2.</p> <p>The pump is for the pumping of thin, clean or slightly contaminated liquids without abrasive or long-fibred solids.</p> <p>The pump is directly coupled with an IEC-flanged 3-phase AC motor.</p> <p>The impeller is hydraulically as well as dynamically balanced.</p> <p><b>The pump has the following characteristics:</b></p> <ul style="list-style-type: none"><li>- flange dimensions according to EN 1092-2,</li><li>- Cast iron volute pump housing,</li><li>- stainless steel shaft and Cast iron impeller and bronze wear rings,</li><li>- unbalanced mechanical shaft seal according to EN 12756.</li></ul> <p><b>Liquid:</b></p> <table><tr><td>Liquid temperature range:</td><td>0 .. 120 °C</td></tr><tr><td>Liquid temp:</td><td>70 °C</td></tr><tr><td>Density:</td><td>977.8 kg/m³</td></tr></table> <p><b>Technical:</b></p> <table><tr><td>Speed for pump data:</td><td>1455 rpm</td></tr><tr><td>Actual calculated flow:</td><td>24.77 l/s</td></tr><tr><td>Resulting head of the pump:</td><td>160 kPa</td></tr><tr><td>Actual impeller diameter:</td><td>222 mm</td></tr><tr><td>Shaft seal:</td><td>BAQE</td></tr><tr><td>Curve tolerance:</td><td>ISO 9906 Annex A</td></tr></table> <p><b>Materials:</b></p> <table><tr><td>Pump housing:</td><td>Cast iron EN-GJL-250 ASTM A48-40 B</td></tr><tr><td>Impeller:</td><td>Cast iron</td></tr></table>	Liquid temperature range:	0 .. 120 °C	Liquid temp:	70 °C	Density:	977.8 kg/m³	Speed for pump data:	1455 rpm	Actual calculated flow:	24.77 l/s	Resulting head of the pump:	160 kPa	Actual impeller diameter:	222 mm	Shaft seal:	BAQE	Curve tolerance:	ISO 9906 Annex A	Pump housing:	Cast iron EN-GJL-250 ASTM A48-40 B	Impeller:	Cast iron	Price on request
Liquid temperature range:	0 .. 120 °C																								
Liquid temp:	70 °C																								
Density:	977.8 kg/m³																								
Speed for pump data:	1455 rpm																								
Actual calculated flow:	24.77 l/s																								
Resulting head of the pump:	160 kPa																								
Actual impeller diameter:	222 mm																								
Shaft seal:	BAQE																								
Curve tolerance:	ISO 9906 Annex A																								
Pump housing:	Cast iron EN-GJL-250 ASTM A48-40 B																								
Impeller:	Cast iron																								

**Project:** Four Seasons Hotel  
**Reference Number:** LTHW 3-4

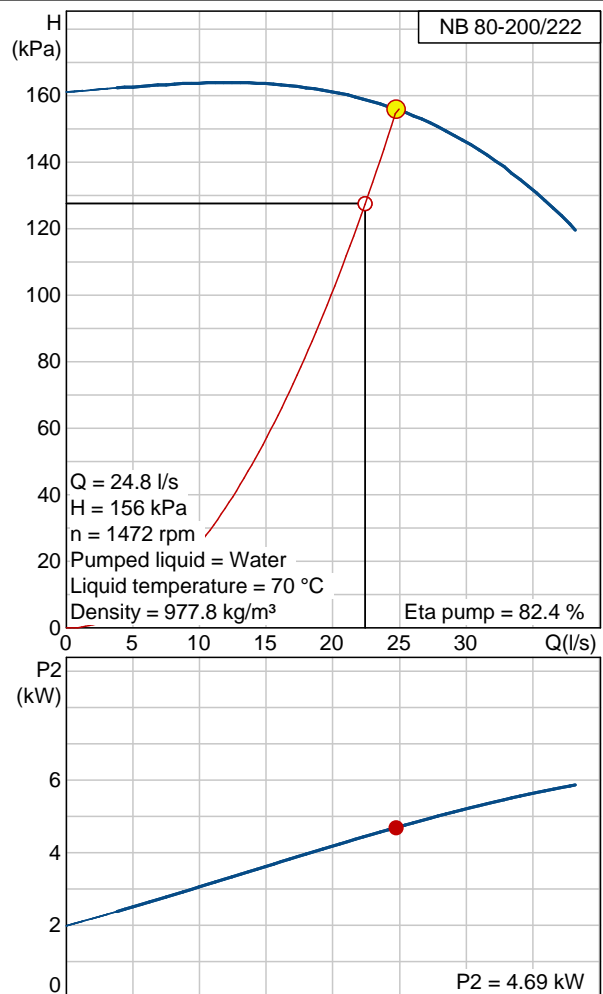
**Client:** Briggs & Forrester  
**Client Number:**  
**Contact:** John Nicholls

Position	Qty.	Description	Single Price
		EN-GJL-200 ASTM A48-30 B	
		<b>Installation:</b> Maximum ambient temperature: 40 °C Maximum operating pressure: 1600 kPa Flange standard: EN 1092-2 Pump inlet: DN 100 Pump outlet: DN 80 Pressure stage: PN16	
		<b>Electrical data:</b> Motor type: SIEMENS Efficiency class: 1 Number of poles: 4 Rated power - P2: 7.5 kW Mains frequency: 50 Hz Rated voltage: 3 x 380-415 D / 660-690 Y V Rated current: 14.4 / 8.3 A Starting current: 700 % Cos phi - power factor: 0,84 Rated speed: 1460 rpm Motor efficiency at full load: 90,3 % Motor efficiency at 3/4 load: 90,5 % Enclosure class (IEC 34-5): 55 Insulation class (IEC 85): F	
		<b>Others:</b> Net weight: 135 kg Gross weight: 137 kg Shipping volume: 0.518 m3	

**Project:** Four Seasons Hotel  
**Reference Number:** LTHW 3-4

**Client:** Briggs & Forrester  
**Client Number:**  
**Contact:** John Nicholls

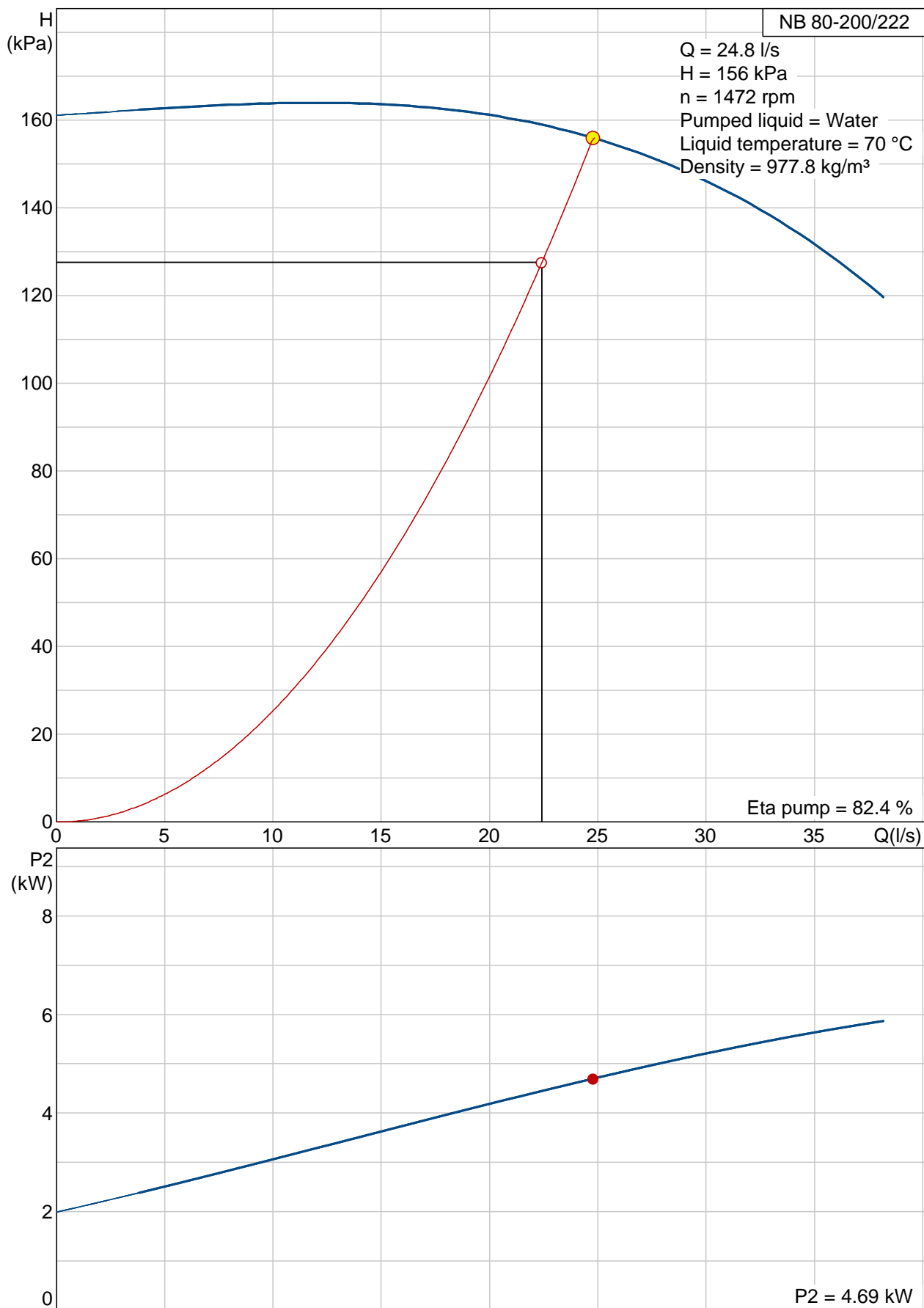
Description	Value
Product name:	NB 80-200/222 A-F-A BAQE
Product No:	95109767
EAN number:	5700836490697
Price:	On request
Technical:	
Speed for pump data:	1455 rpm
Actual calculated flow:	24.77 l/s
Resulting head of the pump:	160 kPa
Actual impeller diameter:	222 mm
Shaft seal:	BAQE
Shaft diameter:	32 mm
Curve tolerance:	ISO 9906 Annex A
Pump version:	A
Materials:	
Pump housing:	Cast iron EN-GJL-250 ASTM A48-40 B
Impeller:	Cast iron EN-GJL-200 ASTM A48-30 B
Material code:	A
Installation:	
Maximum ambient temperature:	40 °C
Maximum operating pressure:	1600 kPa
Flange standard:	EN 1092-2
Connect code:	F
Pump inlet:	DN 100
Pump outlet:	DN 80
Pressure stage:	PN16
Wear ring(s):	neckring(s)
Liquid:	
Liquid temperature range:	0 .. 120 °C
Liquid temp:	70 °C
Density:	977.8 kg/m <sup>3</sup>
Electrical data:	
Motor type:	SIEMENS
Efficiency class:	1
Number of poles:	4
Rated power - P2:	7.5 kW
Mains frequency:	50 Hz
Rated voltage:	3 x 380-415 D / 660-690 Y V
Rated current:	14.4 / 8.3 A
Starting current:	700 %
Cos phi - power factor:	0,84
Rated speed:	1460 rpm
Motor efficiency at full load:	90,3 %
Motor efficiency at 3/4 load:	90,5 %
Enclosure class (IEC 34-5):	55
Insulation class (IEC 85):	F
Motor protec:	PTC
Motor No:	83B15222
Motor range:	Premium
Others:	
Net weight:	135 kg
Gross weight:	137 kg
Shipping volume:	0.518 m3



**Project:** Four Seasons Hotel  
**Reference Number:** LTHW 3-4

**Client:** Briggs & Forrester  
**Client Number:**  
**Contact:** John Nicholls

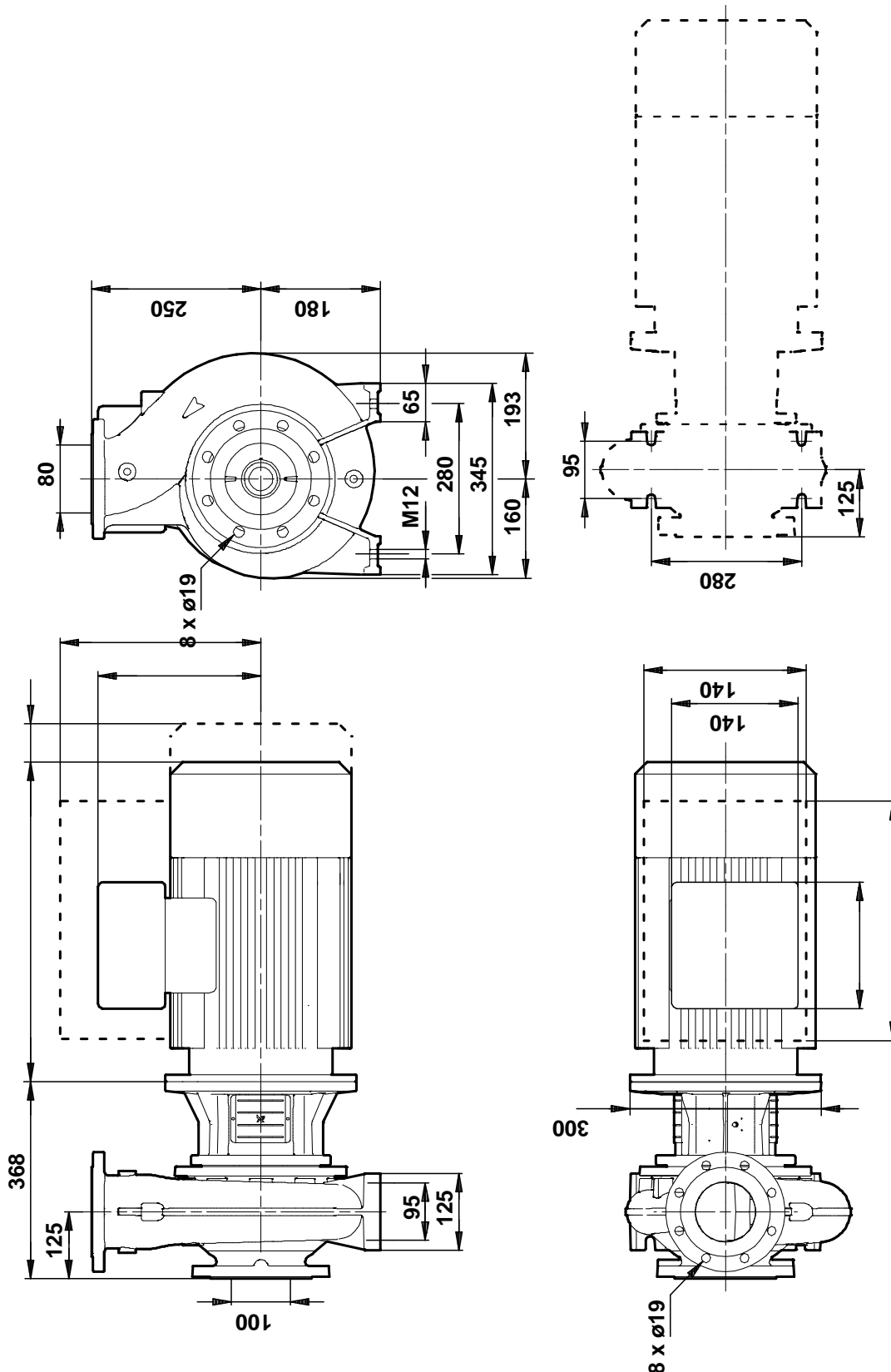
**95109767 NB 80-200/222 50 Hz**



**Project:** Four Seasons Hotel  
**Reference Number:** LTHW 3-4

**Client:** Briggs & Forrester  
**Client Number:**  
**Contact:** John Nicholls

**95109767 NB 80-200/222 50 Hz**

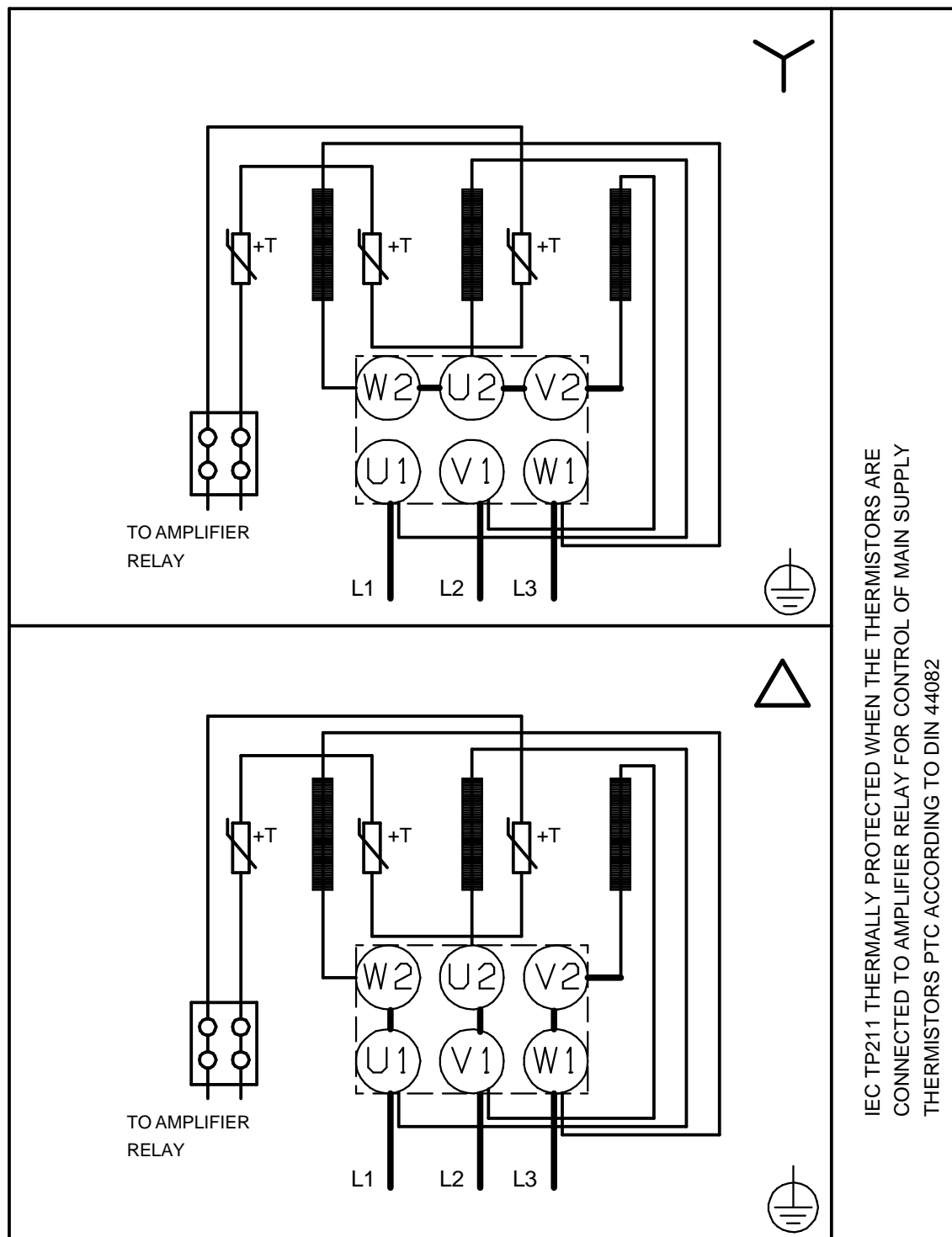


Note! All units are in [mm] unless others are stated.  
Disclaimer: This simplified dimensional drawing does not show all details.

**Project:** Four Seasons Hotel  
**Reference Number:** LTHW 3-4

**Client:** Briggs & Forrester  
**Client Number:**  
**Contact:** John Nicholls

**95109767 NB 80-200/222 50 Hz**



Note! All units are in [mm] unless others are stated.