

Installation kit for closed position indicator microswitch (type Dungs K01/1)

The K01/1 closed position indicator switch is a mechanically activated microswitch for monitoring the position of the valve plate.

This safety device can be fitted to the Elektrogas solenoid valves, using the following kit:

- aluminium adapting rod with length depending from the valve size;
- M3x3 locking plug;
- 1.5 mm Allen wrench.

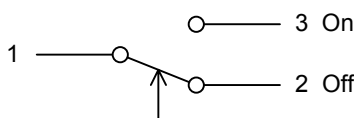
CAUTION: the solenoid valves must be provided with a G1/8" threaded hole on the bottom, to allow the switch assembly (Micro predisposition must be required).

Microswitch installation

- 1) Interrupt gas supply.
- 2) Insert the adapting rod on the switch metallic stem.
- 3) Check the rod is completely introduced and lock it with the M3x3 plug using the Allen wrench provided.
- 4) Remove the 1/8" plug from valve bottom.
- 5) Introduce the adapting rod inside 1/8" hole and screw the microswitch with o-ring.

Electrical connections (IEC 730-1)

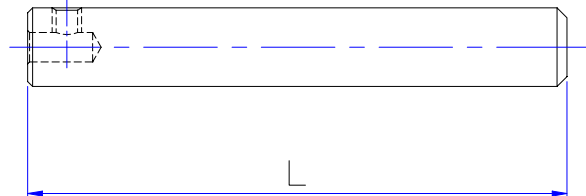
- 1) Turn off power supply.
- 2) Unscrew the DIN plug and connect cables to terminals 1,2,3 how the following draft:



- 3) Screw back the DIN plug using the gasket properly.

Following chart shown the rod length for each type of valve:

Model	L (mm)
3/4" - 1"	25
1"1/4 - 1"1/2	46
2"	55
2"1/2 - 3"	100
4"	112
5" - 6"	170
VMM	54



WARNINGS

- Do not dismantle the valve to install microswitch.
- Do not use unit as lever.
- Avoid overtightening.
- See the manufacturer instructions to set switching point.
- Perform a functional and leakage test after assembly.
- This control must be installed in compliance with the laws in force.

Elettromeccanica Delta S.p.a. reserves the right to updated or make technical changes without prior advice.